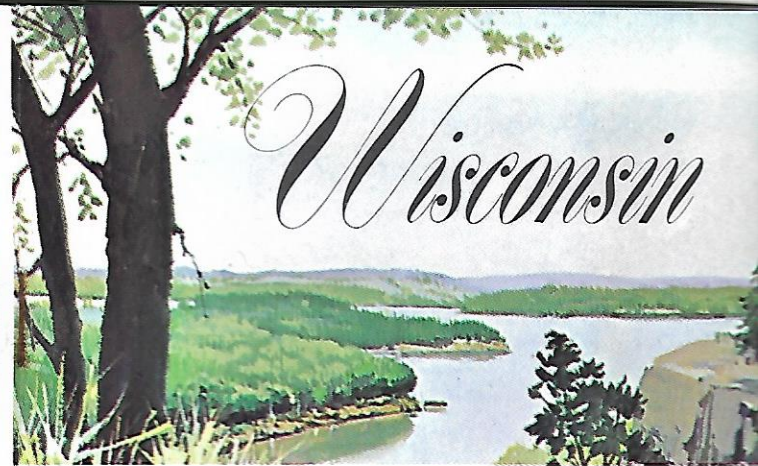


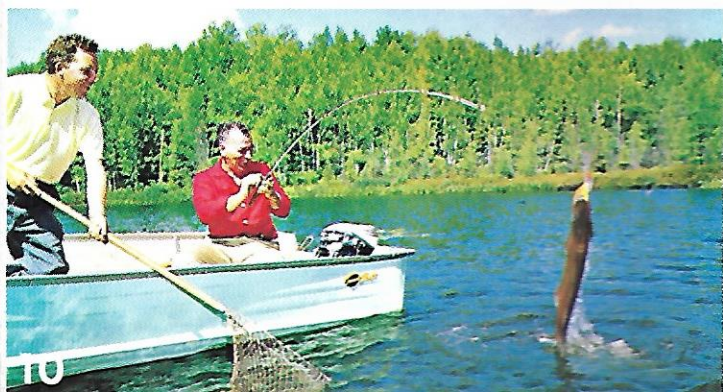


4



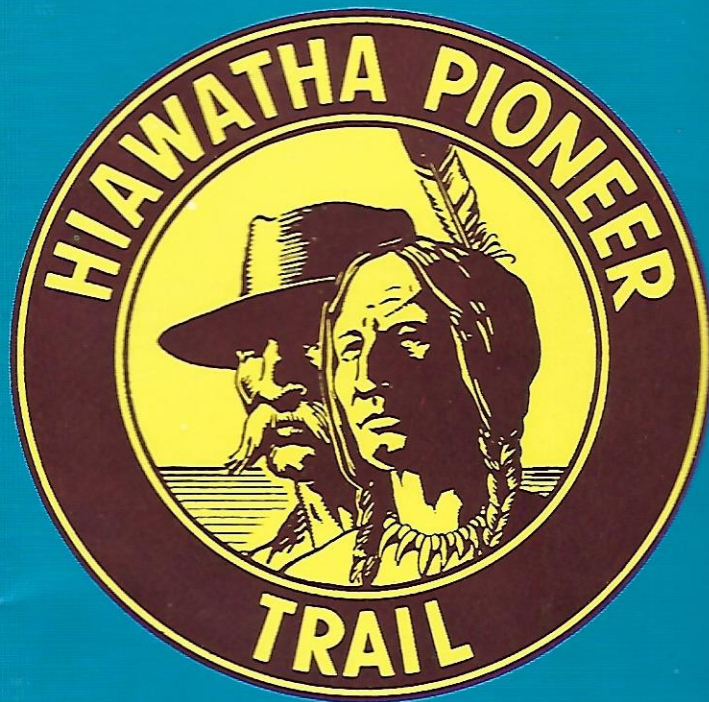
WISCONSIN PIONEER TRAIL

1. Northwoods Wild Life
2. Indian Ceremonials
3. Stonefield Village Restoration
4. Circus World Museum
5. Interesting Historic Sites
6. Inviting Lake Michigan Shoreline
7. Wisconsin Dells Formations
8. Colorful Folk Festivals
9. Unusual, Exciting Boat Rides
10. Plenty of Fishing



TO

on the



THE FOUR-STATE
HERITAGE TRAIL
WISCONSIN BRANCH

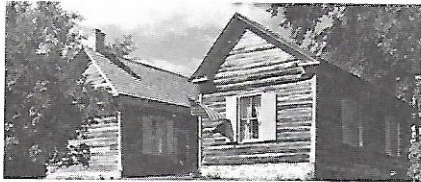
PORTAGE

A warm welcome awaits you in historic, friendly Portage. Spend a day, a month, or a lifetime with us, enjoying the many opportunities for family relaxation and amusement conveniently located in the area.

Clean, modern, modest-priced accommodations, pleasant dining spots, and friendly, helpful residents are here to make your stay in Portage a pleasant, memorable one. Portage offers a complete shopping district and unequalled parking for visitor convenience.

Enjoy the many natural and man-made attractions in the area, hunt, fish, ski, golf, boat, hike or merely relax in peaceful surroundings—Portage welcomes you.

We who live here are proud of Portage. Visit us and see why!



FORT WINNEBAGO SURGEONS QUARTERS

Wisconsin DAR Historical Restoration—Portage, Wisconsin

Fort Winnebago (1828-1854)—Site marked in Wayside Park one mile east of Portage on Wisconsin 33, at the Fox River.

Surgeons Quarters—Only remaining Fort building, across road from park. Built of logs, and a French fur trader's home before 1828, it became the residence of Army Surgeons. See Fort documents and relics, as well as furniture and house furnishings of the period. Guides tell story of Fort and famous officers, among them Jefferson Davis, General W. S. Harney, Major D. E. Twiggs, and General Randolph B. Marcy. Garrison School, used from 1850 to 1960, presents a realistic scene of pioneer and later education in a country school.

Fort Winnebago Cemetery—On Military Road one-half mile east of Surgeon's Quarters. Soldiers of every war from the Revolution through the First World War buried here.

Wauona Trail ("The Carrying Place")—The Fox-Wisconsin portage, travelled by Indians, explorers, soldiers, and pioneer settlers. Called "Wisconsin's most historic mile." Its discovery by the Jolliet-Marquette, June 14, 1673, exploring party, opened the way west for fur traders and for settlement.

United States Government Canal—Between the Wisconsin and the Fox rivers. Finished in 1876, but now closed. Original purpose was to make a complete waterway from the Atlantic Ocean to the Gulf of Mexico.



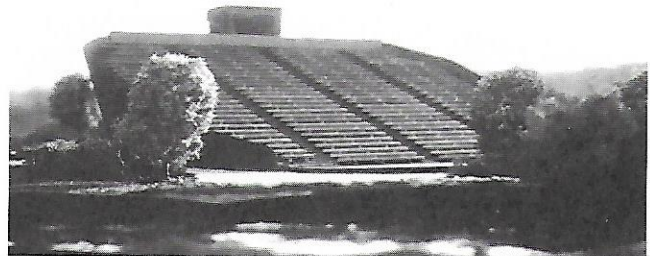
The Old Indian Agency House was built in 1832 for the U.S. Indian Agent to the Winnebagos, John Kinzie.

The house was restored in 1931 by the National Society of the Colonial Dames in the State of Wisconsin, and is maintained by them. It has period furnishings; none later than 1833.

Off Highway 33, 1½ miles east of Portage.

Open daily 9:00 a.m. to 5:00 p.m. Nov. 1 to May 1 by appointment. Phone 608-742-3797.

PORTAGE PLAYHOUSE AT HISTORIC PORTAGE PARK



© Portage Park, Inc.



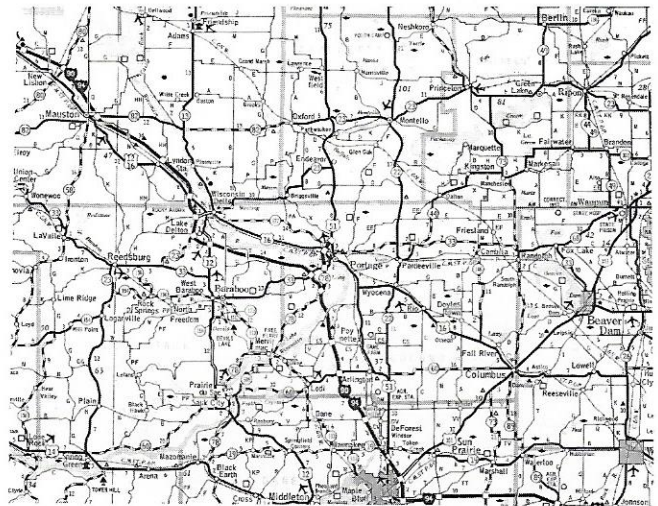
Bob Guilbert invites you to enjoy the most exciting theatrical experience of your life. At Historic Portage Park, running along the north end of the Portage Canal, you'll step back into an authentic recreation of Old Fort Winnebago days.

Across the Canal, you'll find America's most unusual outdoor Theatre . . . the entire stadium revolves! As audiences are turned from scene to scene, they'll thrill to the drama of pioneer lays performed on the very grounds where history was made. This incomparable outdoor setting becomes a giant panoramic stage for this unique living Theatre.

In 1966, visitors can see Portage Park and Portage Playhouse being constructed — as a preview to the first full season and gala opening in 1967.

A project of Portage Community, Inc., the University of Wisconsin Idea Theatre, and the University of Wisconsin Cooperative Extension Service of Columbia County.

YELLOW THUNDER COUNTRY



The heart of Vacationland. Named for Winnebago Chief Yellow Thunder, sponsored by these Chambers of Commerce: Baraboo Businessmen's Assn. • Baraboo-Devil's Lake • Castle Rock Petenwell Assn., Juneau Co. • Castle Rock Petenwell Assn., Adams Co. • Fox Lake • Lake Wisconsin • Lodi • Marquette Co. Tourist Divpt. Assn., Oxford, Montello & Westfield • Merrimac • Mid-Continent RR Museum, North Freedom • Portage • Poynette • Reedsburg • Sauk-Prairie • Wisconsin Dells-Lake Delton. Ex. Sec'y: Palmer McCoy, P.O. Box 98, Portage, Phone: (608) 742-2191.